



BLAULITE ERV

Energy recovery ventilators
for commercial applications

Blauberg North America
1501 Veterans Memorial Pkwy E, Ste. 202,
Lafayette, IN 47905
tel.: 765 780 7139

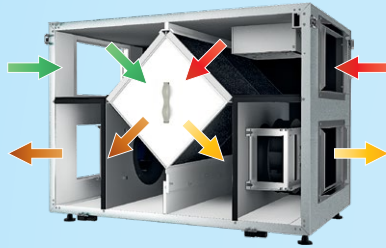
info@blauberg-na.com
blauberg-na.com

Technical changes reserved.
Illustrations and texts are non-binding.

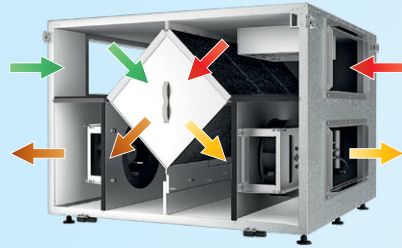
07/2024

BLAULITE energy recovery ventilators are available in five sizes with one, two or three fans in array on both supply and exhaust sides. Units are specially designed for commercial applications.

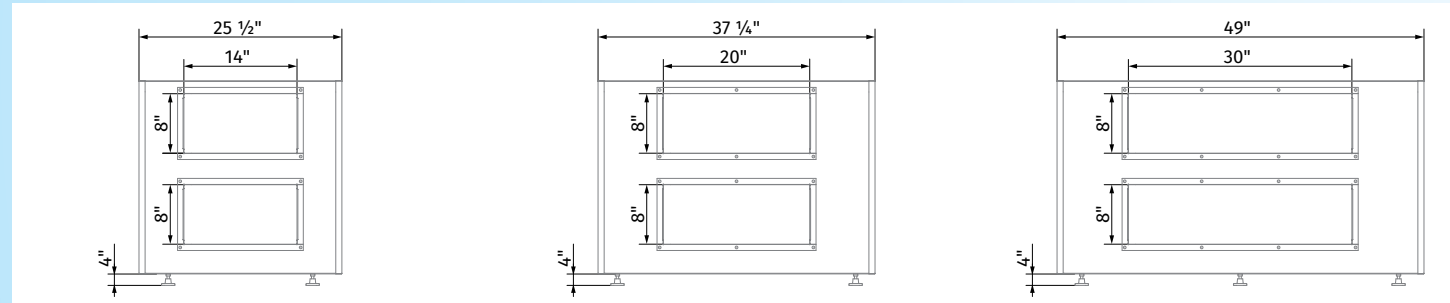
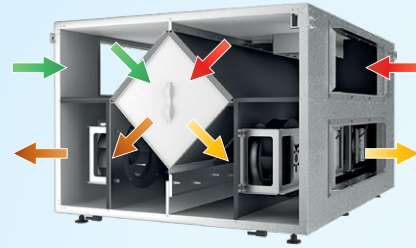
BLAULITE ERV 5, ERV 8



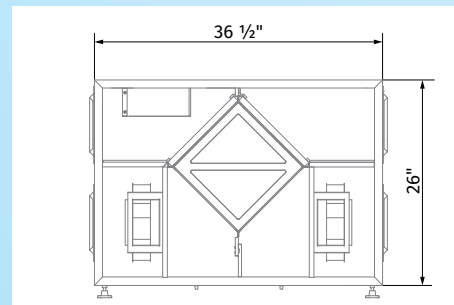
BLAULITE ERV 13, ERV 17



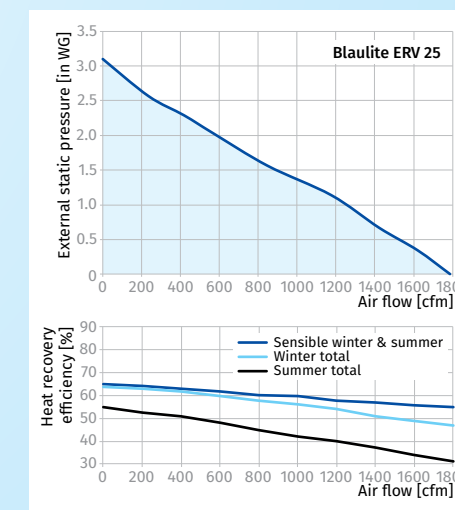
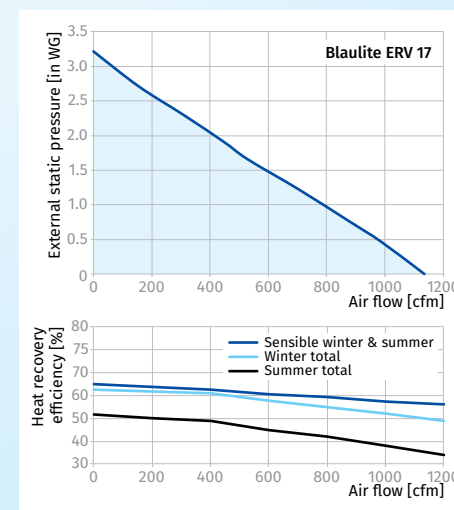
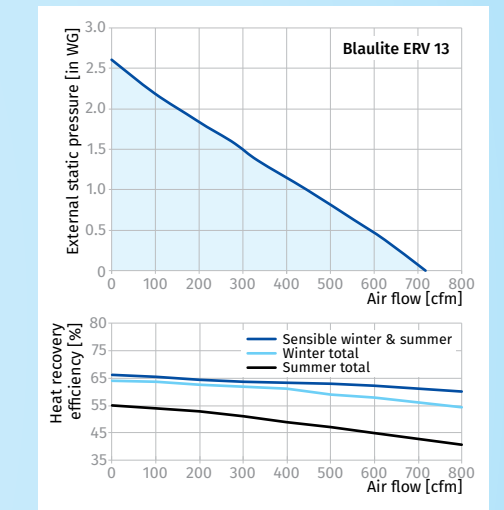
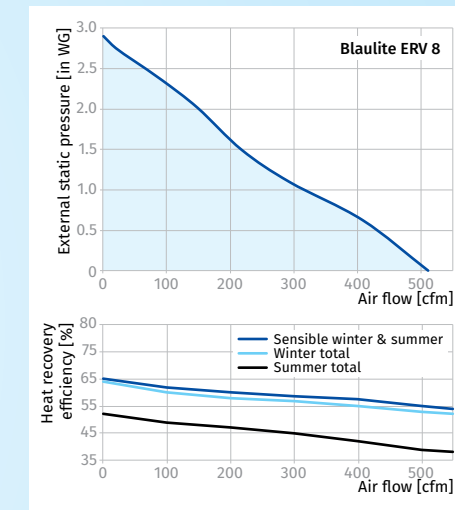
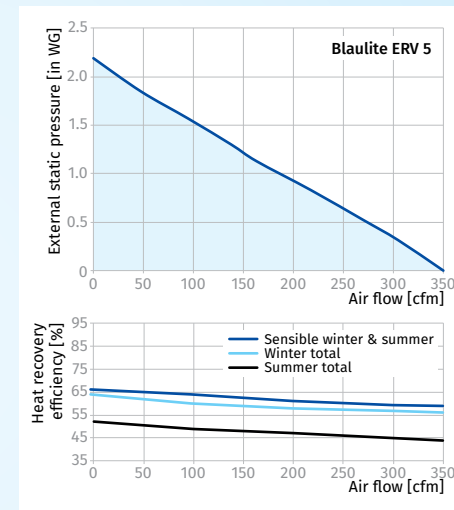
BLAULITE ERV 25



BLAULITE ERV 5 / ERV 8 / ERV 13 / ERV 17 / ERV 25



Parameters	Blaulite ERV 5	Blaulite ERV 8	Blaulite ERV 13	Blaulite ERV 17	Blaulite ERV 25
Voltage [V / 60 Hz]	1 ~ 120	1 ~ 120	1 ~ 120	1 ~ 120	1 ~ 120
Unit power [W]	460	640	880	1330	2010
Unit current [A]	3.8	5.4	7.4	11.1	16.9
Minimum circuit Amps [MCA]	4.8	6.8	9.3	13.9	21.2
Maximum over current protection [MOP]	6.2	8.8	9.8	14.6	20.5
Sensible effectiveness @ max air flow [%]	58	52	61	53	49
Air flow @ ESP 0.4" WG [CFM]	300	450	610	1000	1600
Air flow max [CFM]	350	510	700	1135	1785
Transported air temperature [F]	-35 up to +140	-35 up to +140	-35 up to +140	-35 up to +140	-35 up to +140
Outer skin casing material	21 gauge galvanized steel	21 gauge galvanized steel	21 gauge galvanized steel	21 gauge galvanized steel	21 gauge galvanized steel
Insulation	1" mineral wool	1" mineral wool	1" mineral wool	1" mineral wool	1" mineral wool
Connected air duct size [in]	8x14	8x14	8x20	8x20	8x30



CASING

Steel casing is covered with high quality multilayer aluminium and zinc alloy to prevent corrosion. The casing is equipped with a switch to turn the ventilator off when the service panel is opened. Service access from both left and right side.

FANS

The unit is equipped with supply and exhaust centrifugal fans with backward curved blades and built-in thermal overheating protection with automatic restart. The electric motors and impellers are dynamically balanced.

DEFROST SYSTEM

Fan stop defrost system is activated when the outdoor temperature falls below 23 °F (-5 °C).

ENERGY RECOVERY CORE

Unique enthalpy heat exchanger provides high-efficient heat & humidity recovery. No drain pan required.

FILTER

Washable MERV 6 air filters in exhaust and supply air streams. Filters MERV 8, MERV 13 optional.

CONTROL

The unit incorporates an integrated automation and control system with following functions:

- Operation mode switch.
- Airflow balancing by supply and exhaust fan independent speed adjustment.
- Automatic recovery core frost protection.
- External control device connection.