



## BLAULITE HRV

Heat recovery ventilators  
for commercial applications

Blauberg North America  
1501 Veterans Memorial Pkwy E, Ste. 202,  
Lafayette, IN 47905  
tel.: 765 780 7139

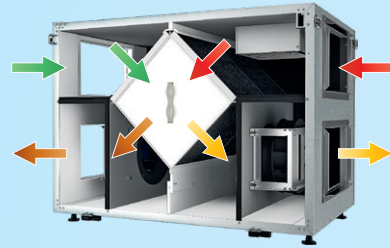
info@blauberg-na.com  
blauberg-na.com

Technical changes reserved.  
Illustrations and texts are non-binding.

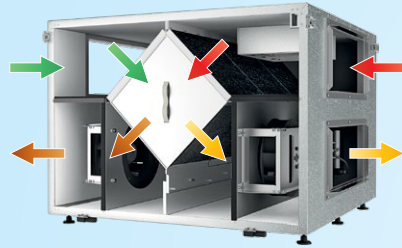
07/2024

**BLAULITE** heat recovery ventilators are available in five sizes with one, two or three fans in array on both supply and exhaust sides. Units are specially designed for commercial applications.

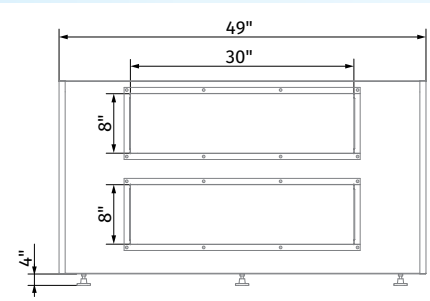
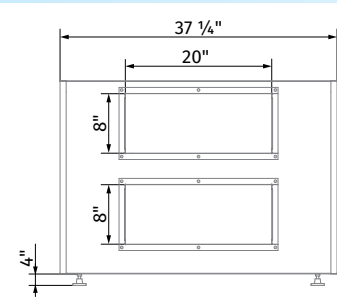
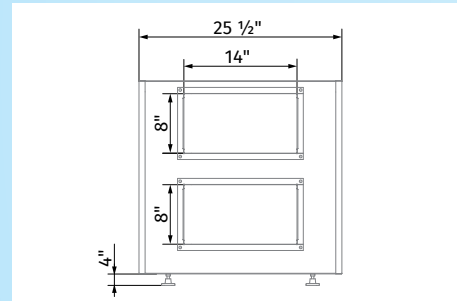
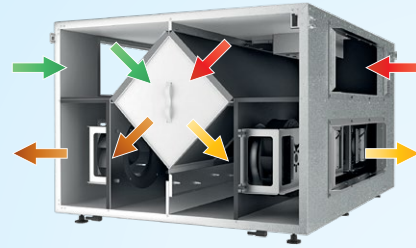
**BLAULITE HRV 5, HRV 8**



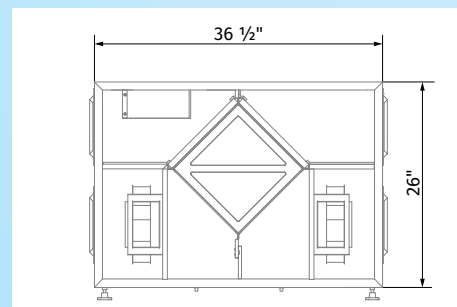
**BLAULITE HRV 13, HRV 17**



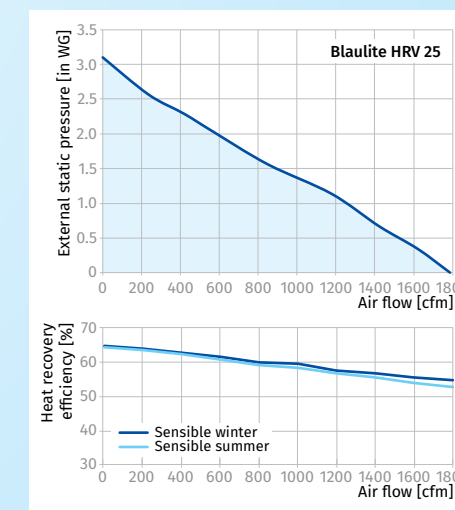
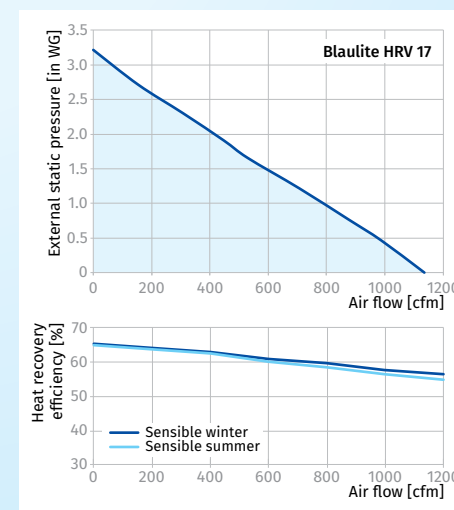
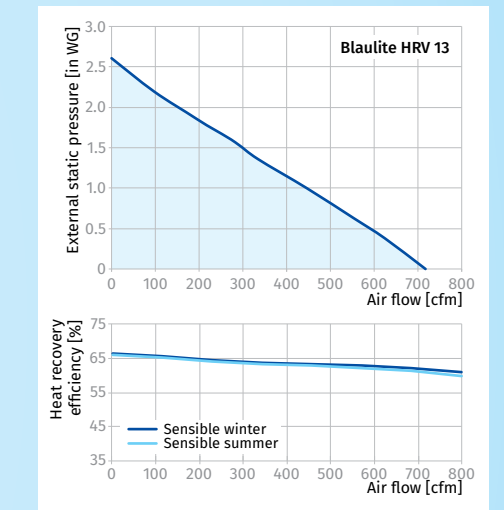
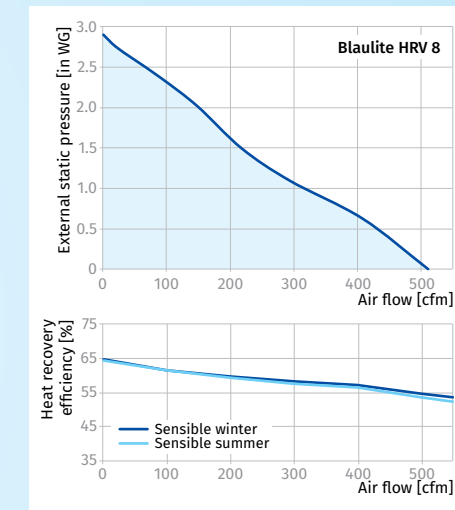
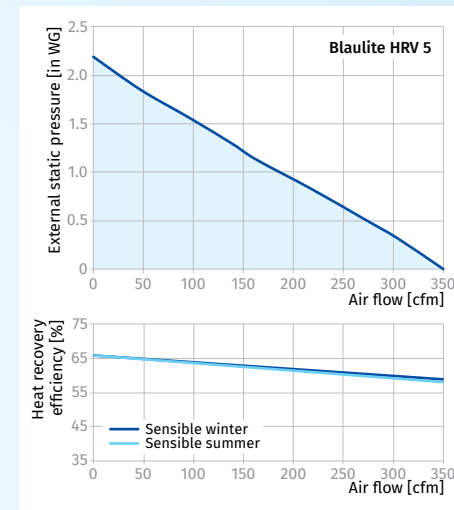
**BLAULITE HRV 25**



**BLAULITE HRV 5 / HRV 8 / HRV 13 / HRV 17 / HRV 25**



Parameters	Blaulite HRV 5	Blaulite HRV 8	Blaulite HRV 13	Blaulite HRV 17	Blaulite HRV 25
Voltage [V / 60 Hz]	1 ~ 120	1 ~ 120	1 ~ 120	1 ~ 120	1 ~ 120
Unit power [W]	460	640	880	1330	2010
Unit current [A]	3.8	5.4	7.4	11.1	16.9
Minimum circuit Amps [MCA]	4.8	6.8	9.3	13.9	21.2
Maximum over current protection [MOP]	6.2	8.8	9.8	14.6	20.5
Sensible effectiveness @ max air flow [%]	66	54	63	56	55
Air flow @ ESP 0.4" WG [CFM]	300	450	610	1000	1600
Air flow max [CFM]	350	510	700	1135	1785
Transported air temperature [F]	-35 up to +140	-35 up to +140	-35 up to +140	-35 up to +140	-35 up to +140
Outer skin casing material	21 gauge galvanized steel	21 gauge galvanized steel	21 gauge galvanized steel	21 gauge galvanized steel	21 gauge galvanized steel
Insulation	1" mineral wool	1" mineral wool	1" mineral wool	1" mineral wool	1" mineral wool
Connected air duct size [in]	8x14	8x14	8x20	8x20	8x30



**CASING**

Steel casing is covered with high quality multilayer aluminium and zinc alloy to prevent corrosion. The casing is equipped with a switch to turn the ventilator off when the service panel is opened. Service access from both left and right side.

**FANS**

The unit is equipped with supply and exhaust centrifugal fans with backward curved blades and build-in thermal overheating protection with automatic restart. The electric motors and impellers are dynamically balanced.

**DEFROST SYSTEM**

Fan stop defrost system is activated when the outdoor temperature falls below 23 °F (-5 °C).

**HEAT RECOVERY CORE**

Unique plate heat exchanger is made of aluminium and designed for high-efficient heat recovery. The stainless steel drain pan is located on the inlet and outlet sides.

**FILTER**

Washable MERV 6 air filters in exhaust and supply air streams. Filters MERV 8, MERV 13 optional.

**CONTROL**

The unit incorporates an integrated automation and control system with following functions:

- Operation mode switch.
- Airflow balancing by supply and exhaust fan independent speed adjustment.
- Automatic recovery core frost protection.
- External control device connection.