

# inWave 100/125

## Sound-insulated inline mixed-flow fans

### Use

- Supply and extract ventilation systems installed in various premises with high requirements to the noise level.
- For ventilation air ducts requiring high pressure, powerful air flow and low noise level.
- Compatible with Ø 4" and 5" air ducts.



**Air flow:**  
up to 207 CFM



**Power:**  
from 22 W

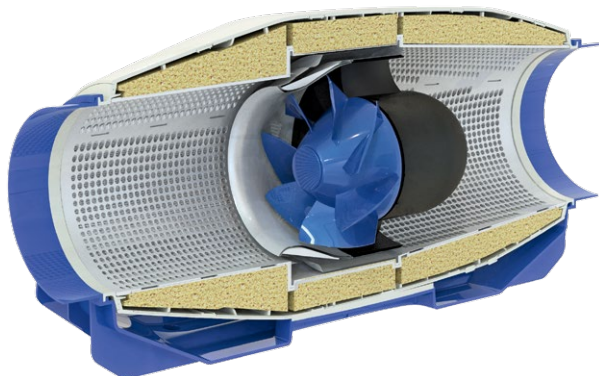


**Noise level:**  
from 1.4 Sones



### Design

- The casing is made of high-quality durable plastic, internally filled with 2" mineral wool thermal- and sound-insulating layer.
- Special inner perforation of the casing and sound-insulating material are designed for wide-frequency sound absorbing.
- Mixed-flow impeller made of high-quality plastic.
- The diffuser, the specially profiled impeller and directing vanes provide high performance and powerful pressure combined with low noise operation.
- External airtight terminal block on the fan casing for power supply.
- Mounting brackets on the fan casing for mounting to the floor, to the wall or ceiling.



### Motor

- Single-phase high-efficient motor with low energy demand on ball bearings.
- Overheating protection due to built-in thermal switches.
- Motor ingress protection rating IPX4.

### Speed control

- Speed selection with an external multi-speed controller (specially ordered accessory).
- Smooth speed control is possible either with an integrated speed controller (**FR1** option), transformer speed controller (specially ordered accessory) when connected to the maximum speed terminal.

### Mounting

- Due to its compact design the fan is the ideal solution for mounting in limited spaces.
- The fan is suitable for mounting in any section of the ventilation system from intake to the end of the ductwork.
- Wall or ceiling mounting with a special bracket on the fan casing.

### Designation key

Series	Duct diameter [mm]	Options
inWave	100/125	<b>FR1:</b> built-in smooth speed controller adjustable from 0 to 100 %. The fan is supplied with a pre-wired cable with a standard electric plug <b>G1:</b> smooth speed controller with an electronic thermostat and an external temperature sensor that is fixed on 13 ft cable. The fan is supplied with a pre-wired power cable with a standard plug <b>GT1:</b> speed controller, temperature controller with external temperature sensor, 5 min timer switch and power cable with mains plug <b>GT11:</b> speed controller, temperature controller with integrated temperature sensor, 5 min timer switch and power cable with mains plug <b>GS1:</b> speed controller with an electronic thermostat and a temperature sensor fixed on a 13 ft cable. Temperature-based switching on

### Accessories

Silencers	Filter boxes	Electric heaters	Water heaters	Backdraft air dampers	Air dampers	Clamps	Speed switches
SD	KFBK	KFBT	EKH	WKH	VRV	VK / VKA	K
							CDP-2/5

**Modifications and options**

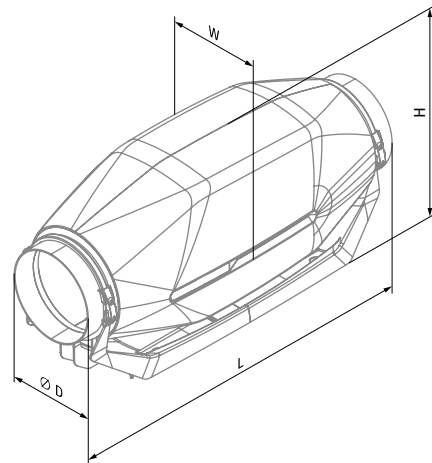
- o **FR1:** smooth speed controller adjustable from 0 to 100 % and power cable with mains plug.



- o **G1:** smooth speed controller with an electronic thermostat and an external temperature sensor that is fixed on 13 ft power cable with a standard electric plug.
- o **G11:** smooth speed controller with an electronic thermostat and a temperature sensor integrated into the air duct. The fan is supplied with a standard electric plug.
- o **GT11:** speed controller, temperature controller with integrated temperature sensor, 5 min timer switch and power cable with mains plug.
- o **GT1:** speed controller, temperature controller with external temperature sensor (cable length 13 ft), 5 min timer switch and power cable with mains plug.
- o **GS1:** speed and temperature regulators with an external temperature sensor attached to a 13 ft cable, shutting on when the set temperature is reached. Power cord with a mains plug.

**Dimensions [in]**

Type	Ø D	H	L	W	Weight [lb]
inWave 100/125 (spigot 4")	3 7/8	10 3/4	29 5/8	10	11
inWave 100/125 (spigot 5")	4 7/8	10 3/4	26 3/4	10	11



inWave 100/125 (spigot 4")



inWave 100/125 (spigot 5")

**Technical data**

	Duct dia	Energy Star compliance	Speed	RPM*	Sones	Watts*	Amps*	CFM vs. Static Pressure (Ps) [in WG]										Max Ps [in WG]	Volts	
								0	0.1	0.2	0.3	0.4	0.5	0.6	0.7	0.8	0.9			1
inWave 100/125	5"	yes	high	3060	2	29	0.24	207	190	167	128	103	57	25	3	-	-	-	0.7	120 V / 60 Hz
			low	2475	1.4	22	0.2	168	145	121	93	55	3	-	-	-	-	-	0.5	

\* The parameters RPM, Watts, Amps are indicated at 0.2 in WG static pressure

# inWave 150/160

## Sound-insulated inline mixed-flow fans

### Use

- Supply and extract ventilation systems installed in various premises with high requirements to the noise level.
- For ventilation air ducts requiring high pressure, powerful air flow and low noise level.
- Compatible with Ø 6" air ducts.



**Air flow:**  
up to 298 CFM



**Power:**  
from 53 W

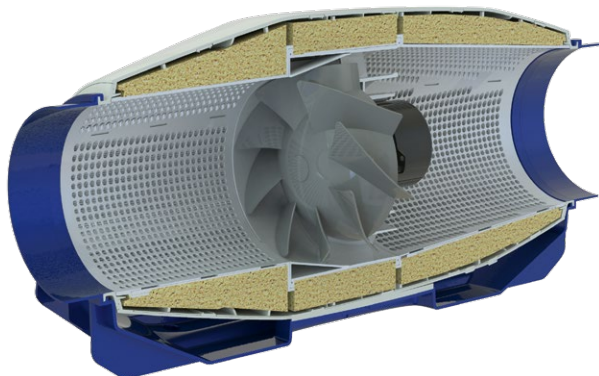


**Noise level:**  
from 1.5 Sones



### Design

- The casing is made of high-quality durable plastic, internally filled with 2" mineral wool thermal- and sound-insulating layer.
- Special inner perforation of the casing and sound-insulating material are designed for wide-frequency sound absorbing.
- Mixed-flow impeller made of high-quality plastic.
- The diffuser, the specially profiled impeller and directing vanes provide high performance and powerful pressure combined with low noise operation.
- External airtight terminal block on the fan casing for power supply.
- Mounting brackets on the fan casing for mounting to the floor, to the wall or ceiling.



### Motor

- Single-phase high-efficient motor with low energy demand on ball bearings.
- Overheating protection due to built-in thermal switches.
- Motor ingress protection rating IPX4.

### Speed control

- Speed selection with an external multi-speed controller (specially ordered accessory).
- Smooth speed control is possible either with an integrated speed controller (**FR1** option), transformer speed controller (specially ordered accessory) when connected to the maximum speed terminal.

### Mounting

- Due to its compact design the fan is the ideal solution for mounting in limited spaces.
- The fan is suitable for mounting in any section of the ventilation system from intake to the end of the ductwork.
- Wall or ceiling mounting with a special bracket on the fan casing.

### Designation key

Series	Duct diameter [mm]	Options
inWave	150/160	<b>FR1:</b> built-in smooth speed controller adjustable from 0 to 100 %. The fan is supplied with a pre-wired cable with a standard electric plug <b>G1:</b> smooth speed controller with an electronic thermostat and an external temperature sensor that is fixed on 13 ft cable. The fan is supplied with a pre-wired power cable with a standard plug <b>GT1:</b> speed controller, temperature controller with external temperature sensor, 5 min timer switch and power cable with mains plug <b>GT11:</b> speed controller, temperature controller with integrated temperature sensor, 5 min timer switch and power cable with mains plug <b>GS1:</b> speed controller with an electronic thermostat and a temperature sensor fixed on a 13 ft cable. Temperature-based switching on

### Accessories

Silencers	Filter boxes	Electric heaters	Water heaters	Backdraft air dampers	Air dampers	Clamps	Speed switches
SD	KFBK	KFBT	EKH	WKH	VRV	VK / VKA	K
							CDP-2/5

**Modifications and options**

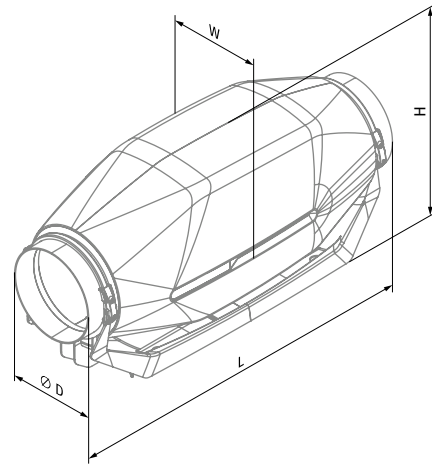
- o **FR1:** smooth speed controller adjustable from 0 to 100 % and power cable with mains plug.



- o **G1:** smooth speed controller with an electronic thermostat and an external temperature sensor that is fixed on 13 ft power cable with a standard electric plug.
- o **G11:** smooth speed controller with an electronic thermostat and a temperature sensor integrated into the air duct. The fan is supplied with a standard electric plug.
- o **GT11:** speed controller, temperature controller with integrated temperature sensor, 5 min timer switch and power cable with mains plug.
- o **GT1:** speed controller, temperature controller with external temperature sensor (cable length 13 ft), 5 min timer switch and power cable with mains plug.
- o **GS1:** speed and temperature regulators with an external temperature sensor attached to a 13 ft cable, shutting on when the set temperature is reached. Power cord with a mains plug.

**Dimensions [in]**

Type	Ø D	H	L	W	Weight [lb]
inWave 150/160 (spigot 6")	5 7/8	10 3/4	23 7/8	10	11



inWave 150/160 (spigot 6", spigot 6" with a rubber seal)

**Technical data**

	Duct dia	Energy Star compliance	Speed	RPM*	Sones	Watts*	Amps*	CFM vs. Static Pressure (Ps) [in WG]										Max Ps [in WG]	Volts	
								0	0.1	0.2	0.3	0.4	0.5	0.6	0.7	0.8	0.9			1
inWave 150/160	6"	no	high	2540	2.5	68.5	0.57	298	282	265	242	220	197	170	135	75	30	5	1.02	120 V / 60 Hz
			low	1800	1.5	53	0.45	211	185	158	126	97	70	30	-	-	-	-	0.67	

\* The parameters RPM, Watts, Amps are indicated at 0.2 in WG static pressure